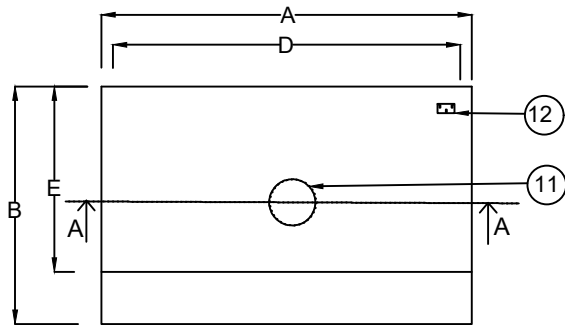


SECTION AA



ENGINEERING DETAIL

- 1) Blower 2) Granite Work table 3) Polycarbonate Door 4) Door Handle/Knob 5) Levelling Leg  
 6) ON/OFF Switch 7) 5/15 amps switch ans socket 8) Tube Light 9) FRB inner sheet  
 10) Louver On Door 11) 8" provision for exhaust pipe 12) Male/Female Connector 13) Sink

NOTE :-

ALL DIMENSIONS ARE IN mm, Unless Otherwise Specified

Where x Denotes the MOC (Material Of Construction) See GI-Galvanised Iron,SS-IS 304 Grade Stainless Steel

MODEL	OVERALL DIMENSION			INTERNAL DIMENSION		
	A	B	C	D	E	F
AFH 600XX*	700	850	1950	600	600	600
AFH 900XX*	1000	850	1950	900	600	600
AFH 1200XX*	1300	850	1950	1200	600	600

 <b>AEROMECH EQUIPMENTS PRIVATE LIMITED</b> 3/1760,F-5,Sri Sudharsan Flat,Bell Nagar, Kundrathur Road,Porur, Chennai- 600 116 Phone : 044 43842021 / 9445064312 Fax : 43842030 E-mail : mail@aeromech.in / Website :www.aeromech.in			
			Product Name: AEROMECH Make FUME HOOD
Drawing No:	WD 006/AFH/18-19	Scale: 1 : 750	Rev. 01